



# MONTHLY MEMBERSHIP PROGRESS REPORT

District 7 N

Results as of: 2/28/2014

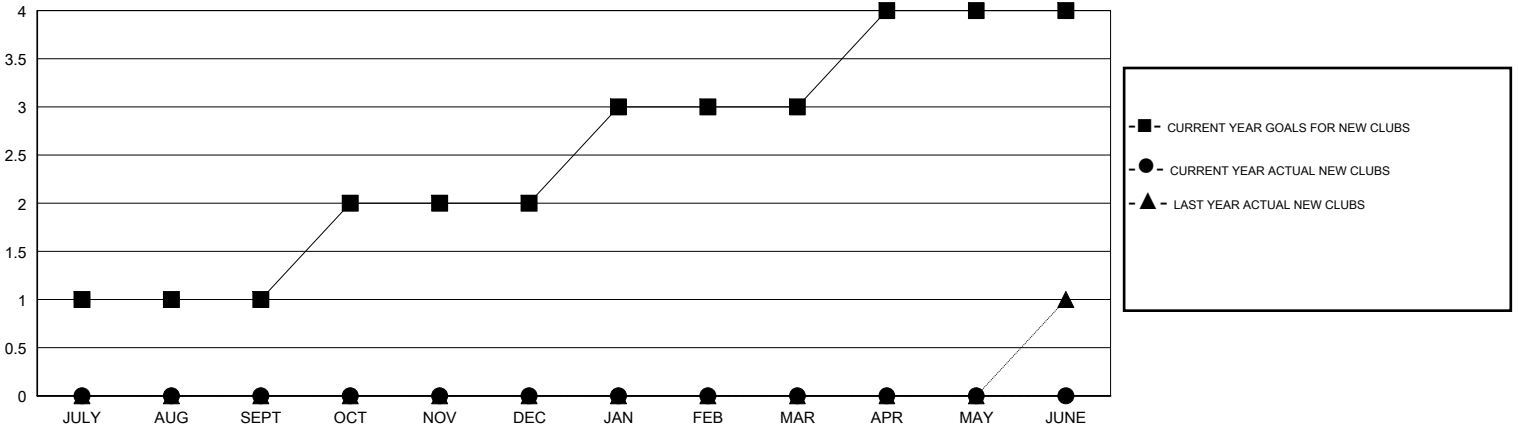
GMT: HAL GRIFFIN

LOCATION ARKANSAS

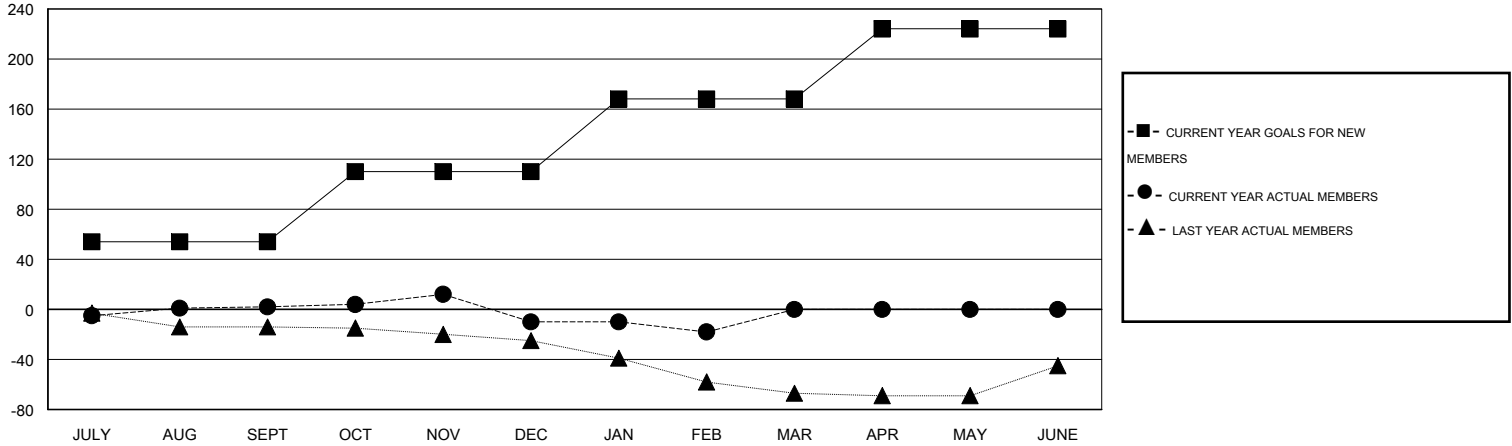
GMT CA 1

Clubs					Members				
RESULTS FOR 2013-2014					RESULTS FOR 2013-2014				
QUARTER	NEW CLUB GOAL	ACTUAL NEW CLUBS	ACTUAL DROPPED CLUBS	ACTUAL NET GAIN/LOSS	QUARTER	NEW MEMBER GOAL	ACTUAL TOTAL MEMBERS ADDED	ACTUAL DROPPED MEMBERS	ACTUAL NET GAIN/LOSS
JULY/AUG/SEPT	1	0	0	0	JULY/AUG/SEPT	54	27	25	2
OCT/NOV/DEC	1	0	1	-1	OCT/NOV/DEC	56	25	37	-12
JAN/FEB/MAR	1	0	0	0	JAN/FEB/MAR	58	15	23	-8
APR/MAY/JUNE	1	0	0	0	APR/MAY/JUNE	56	0	0	0

GOALS AND ACTUAL NEW CLUBS CUMULATIVE



GOALS AND ACTUAL MEMBERS CUMULATIVE



DROPPED CLUBS: 1	24 CLUBS OF 37 ADDED 1 OR MORE NEW MEMBERS	<u>GENDER DISTRIBUTION</u>	
<u>DROPPED MEMBERS</u>		MALE	513 (66.45%)
DECEASED	<a href="#">CLICK HERE FOR HEALTH ASSESSMENT DATA</a>	FEMALE	259 (33.55%)
CLUB CANCELLED		FAMILY UNIT MEMBERS	152
OTHER		HEAD OF HOUSEHOLD	76
TOTAL		NON-HEAD OF HOUSEHOLD	76